

# IMO Polar Seminar 2025

## Training for Antarctic navigation & Operations



Capt. David Marionneau







## Guests come on board with high expectations:

- Trip of a lifetime
- Experience the polar environment of the Antarctic
- High quality of enrichments and story telling from experts
- Participate to activities (Landings, hiking, zodiac outings, wildlife observation, ship cruising)
- Bring back unforgettable memories and photos





To achieve this goal, we must have:

- The highest standard of safety for navigation and operations
- The highest standard in the preservation of the environment
- Skilled crew members on board and continuously train them



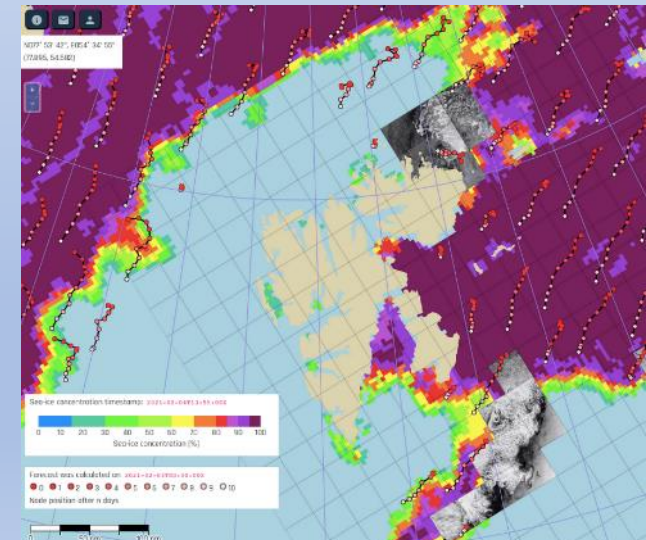
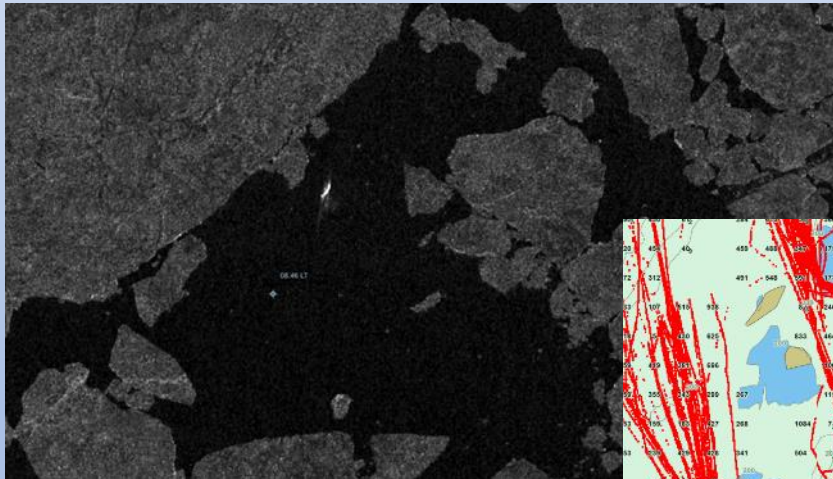


## Preparation of the voyage:

- Accurate passage Planning
- Bridge Team trained with passage planning procedures and its execution / Amendment
- Seasonality / Ice condition
- Environmental parameters
- Design Limit and Operational Limits
- Bathymetry
- POLARIS

## Use of cutting edge navigation tools and being proficient with them:

- IcySea
- Olex
- Airbus







### **Have enough skilled resources on board:**

- **Sharing the experience of the region**
- **Absorb the workload and prevent fatigue.**

### **Bridge Ressource Management:**

- Communication is the key: Fluid at every levels of the bridge team. Everyone must talk!
- Constant sharing of knowledge and experience
  - Ice report
  - Satellite photos
  - Weather reports/forecasts
  - Real-time navigation options. Regular flow of information to the navigator
- Constantly infuse the « Polar Culture ».
- 90 % of our Captains have been with Ponant since their cadetship. 90% of our officers have been cadets with Ponant.
- 5 cadets per ship

## Operations:

The bridge is the operational control tower:

- **Weather monitoring**
- **Ice condition and evolution of surroundings**
- Communication with Expedition Team
  - Landing operations
  - Zodiac outing / Position monitoring
  - Communication with Safety Zodiac
  - Helicopter
  - Medical Emergency



## LANDBASED training and familiarization:

### Simulator (Polar Courses):

- Ship's specific scenarios
- Captains and/or senior officers among the instructors
- Sharing of experience before stepping on board

### Itinerary Design:

- Captains involved in the design of itineraries.
- RETEX from every season / Lesson learnt

### Additional:

- Management Training





## SHIPBOARD Training:

### On board mentoring:

- On board mentoring by Masters with years of experience in the region of operation.





## Specific Emergency drills:

- Medical
- Man overboard (Safety Zodiac)
- Communication with MRCCs
- Joined SAR drills



## For continuous improvements

- Integration of the expedition into the fleet **SMS**:
  - Clear SOP for each activity (Zodiac, kayak, hikes...)
  - Expedition Operation Permit
  - Reporting of the nearmisses
  - Sharing of Lesson learnt
- Sharing the experience of the region – Mentoring
- Have enough skilled resources on board
  - Absorb the workload and prevent fatigue.
- Design and Operational Limits

